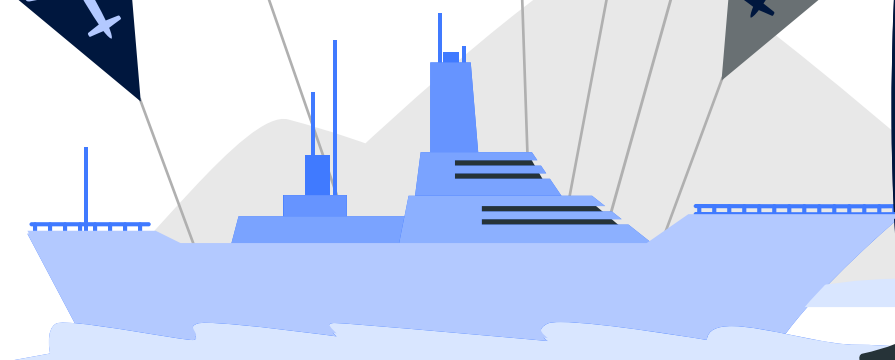
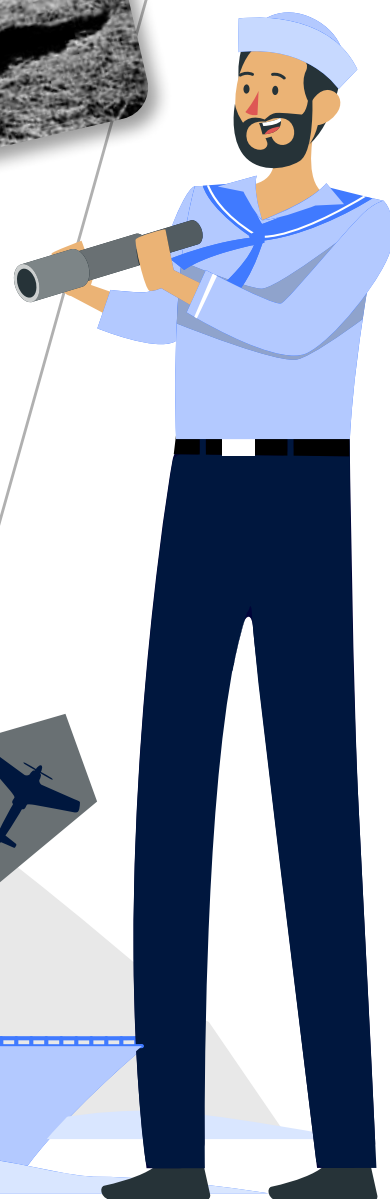
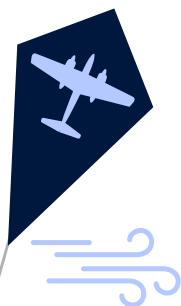


TARGET KITES

WHAT IS A TARGET KITE?

A target kite is a very large kite used during World War II that was manually controlled by a reel and harness worn at the waist and had the outline of an enemy aircraft on the front. Target kites were used during WWII to help United States naval personnel on ships to identify enemy planes and for target practice.



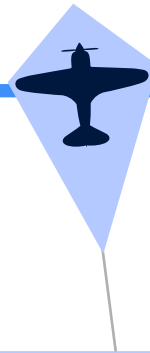
WHY WERE TARGET KITES IMPORTANT DURING WORLD WAR II?

Target kites had the image of enemy airplanes outlined on them and could mimic the movement of airplanes by looping, diving, climbing, and making figure eights. Because they could maneuver so easily, the kites were very effective in training sailors on how to identify and target enemy aircraft.



DID YOU KNOW...

Over 300,000 target kites were built and used during World War II!



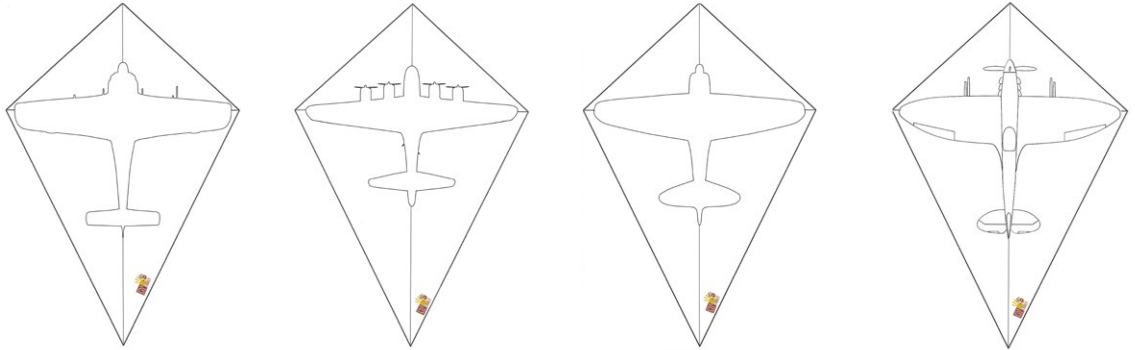
MAKE A TARGET KITE

WHAT YOU WILL NEED

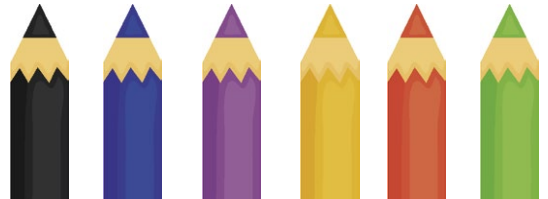
- Target kite print out of your choice
- Markers, crayons or colored pencils
- Scissors
- Small piece of scotch tape
- 2-3 pieces of string or ribbon

INSTRUCTIONS

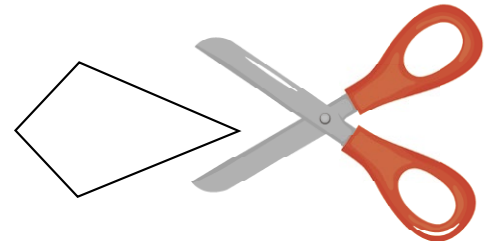
1. Using one (or more!) of the templates provided, print out the kite of your choice.



2. Color your kite any way that you'd like!



3. When you are finished coloring your kite, cut out the kite shape around the heavy black outline.



4. Attach ribbon or string to the bottom with a piece of tape and.... Voila!

